

# Gentle Foaming Cleanser

Cleanse + Prepare



- Foaming cleanser effectively removes dirt, oil and makeup
- Gentle formula will not leave the skin feeling tight, dry or stripped of its natural oils
- Protects the skin from barrier disruption and inflammatory factors
- Versatile formula; can be used by most skin types and conditions
- Excellent for full body cleansing

*epionce*  
By Science and Beauty of Health, Inc.

# Lytic Gel Cleanser

Cleanse + Prepare



- Refreshing anti-microbial cleanser effectively removes dirt, oil and makeup
- Will not cause unnecessary dryness or strip the skin barrier
- Helps clear pores to improve oily/acne-prone skin
- Use to cleanse before chemical peels or microdermabrasion
- Ideal cleanser for men and teens, and especially problem/oily skin types
- May be used as a body wash to help treat acne, dermatitis and psoriasis
- May be used as a shampoo to help with seborrheic dermatitis

*epionce*  
By Science and Beauty of Health, Inc.

# Lytics

Correct + Boost



## Epionce Lytic products:

- 4 formulas to suit all skin types
- Lytic formulations differ in the amount of salicylic and azelaic acid
- Accelerate cell turnover and smooth skin texture
- Deep cleanse pores to help other products penetrate more effectively
- Have an anti-inflammatory effect
- Contain ingredients that prevent all 4 acne causing microbes from multiplying (gram positive, gram negative, yeast, *P. acnes*)
- Quickly reduces redness and inflammation after facial treatments/extractions
- May be used 24 hours post-procedure if skin barrier has healed

*epionce*  
By Science For Beauty of Canada Inc.

## How Lytics Work

- Keratolytic Technology works with key active ingredients to effectively clear pores and impurities from the skin, as well as remove dead skin cells from the surface
- Lytic treatment products are important to the Epionce regimen because they pave the way for Epionce Renewals to effectively deliver active ingredients into the skin
- For optimal benefit, it is important to wait at least 5-7 minutes after Lytic application before applying a Renewal product



## Benefits of Epionce Lytics

- Use in place of tretinoin, retinols, glycolic-acid based and other corrective products for great results without side effects
- Effective in treating acne, rosacea, sebaceous hyperplasia, keratosis pilaris, psoriasis, dermatitis (seborrheic, perioral) and hyperpigmentation
- Reduce redness in the skin
- Use under light steam to help soften comedones prior to extraction
- Spot treatment for post-extraction and blemishes



## Renewal Facial Products

Renew + Fortify



### Core Renewal Products

Renew + Fortify products reduce the visible signs of skin aging such as fine lines and wrinkles; boost hydration and barrier strength; help stimulate collagen synthesis

- Renewal Facial Cream
- Renewal Facial Lotion
- Renewal Lite Facial Lotion

*epionce*  
By the Science of Beauty.™

## How Renewals Work

- Renewal formulas are unique because they contain a proprietary delivery system designed to effectively deliver ingredients into the skin for visible and measurable benefit
- Deliver without destruction; Renewals deliver therapeutic concentrations of active ingredients without causing irritation or unnecessary disruption to the skin barrier



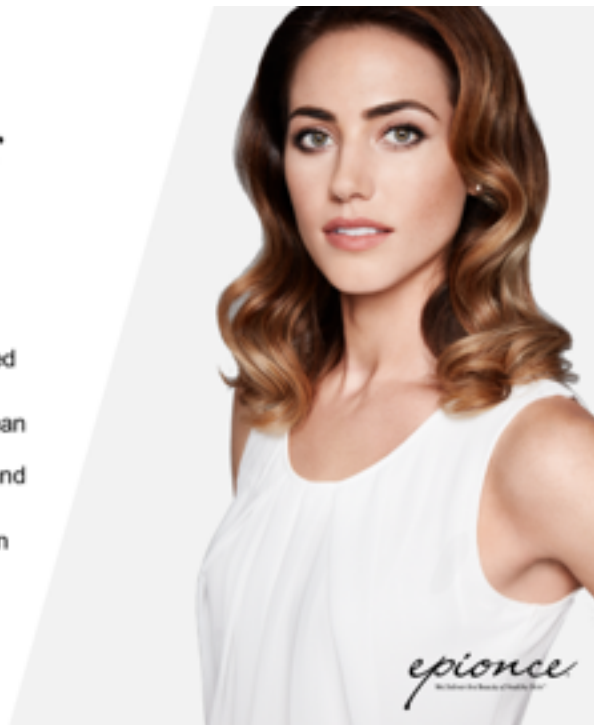
## Benefits of Renewals

- Help strengthen and repair the skin barrier
- Calm inflammation in the skin
- Improve skin radiance
- Reduce the visible appearance of fine lines and wrinkles
- Boost hydration levels in the skin by moisturizing from the inside out
- When used with Lytic product, anti-aging results equal to prescription tretinoin – without dryness or irritation
- Cream or lotion formulations for different skin types



## The Importance of Using Lytics + Renewals Together

- Lytics + Renewal Facial products are the core components of the Epionce system
- Each product contains a synergistic blend of powerful active ingredients, but in order to produce optimal therapeutic results, Lytics and Renewals should be used together daily
- The comedolytic ingredients found in Lytic products clean out pores and remove excess stratum corneum scale, which help the Renewal products optimally penetrate and diffuse into the targeted cells in the epidermis
- In clinical trials, Renewal Facial Cream + Lytic Tx, when used together, provided anti-aging results equal to prescription tretinoin – without irritation



## Intensive Nourishing Cream

Renew + Fortify



- Highly emollient formula contains maximum levels of active complexes
- Improves skin radiance and clarity while reducing fine lines and wrinkles
- Ultra hydration and rejuvenation for mature, photoaged skin; ideal for most skin types
- Soft-focus technology diffuses visible light to reduce look of fine lines
- Use daily to hydrate, strengthen and repair the skin barrier and help stimulate collagen synthesis
- Helps reduce symptoms associated with rosacea
- Excellent for use on neck and décolleté

*epionce*  
The Science of Beauty of Health Care

# Intense Defense Serum

Renew + Fortify



## The Multivitamin for the Skin

- Anti-aging serum contains botanical sources of vitamins A, B, C, D and E
- Highly concentrated stable formula does not compromise the skin barrier
- Clinically proven to reduce fine lines and wrinkles better than leading serums
- Boosts the benefits of Renewal Facial products for maximum rejuvenation
- Daily anti-aging + repair formula ideal for all skin types – from dry to oily
- Botanical formula has mild photo protective and barrier repair benefits

*epionce*  
By Science and Beauty of Health, Inc.

# Renewal Eye Cream

Renew + Fortify



- Diminishes the appearance of fine lines and wrinkles around the eyes
- Soft-focus technology diffuses visible light to reduce look of dark circles
- Optimized formula for the eye area hydrates and reduces puffiness
- The ideal go-to product for all skin types and Epionce regimens
- Improves undereye radiance and clarity; helps stimulate collagen synthesis
- Non-greasy formula ideal for daily use under makeup

*epionce*  
By Science and Beauty of Health, Inc.



## Daily Shield Tinted SPF 50

Protect + Prevent



- Physical block - micronized Zinc Oxide (9.3%) and Titanium Dioxide (4.8%)
- Broad-spectrum SPF 50
- One shade formula blends flawlessly – for all skin tones
- Antioxidant fortified
- Very water resistant (80 minutes)
- Anti-inflammatory properties
- Use daily alone or under makeup
- High sun and pollution-blocking efficacy ideal for daily protection

*epionce*  
By Science. For Beauty. Of Healthy Skin.

## Ultra Shield Lotion SPF 50

Protect + Prevent



- Physical and chemical block - Zinc Oxide (10.1%), Homosalate (9.95%) and Octisalate (5.0%)
- Provides lightweight, quick-absorbing, broad-spectrum protection
- Anti-oxidant fortified
- Anti-inflammatory properties
- Blends flawlessly for use alone or under makeup
- Very water resistant (80 minutes)

*epionce*  
By Science. For Beauty. Of Healthy Skin.

# Essential Recovery Kit

Post Procedure Care



Epionce Essential Recovery Kit provides 3 essential products to calm, hydrate and protect the skin following moderate to deeper in-clinic resurfacing procedures.

- Priming Oil
- Enriched Firming Mask
- Medical Barrier Cream

*epionce*  
By Science and Beauty of Health Care